

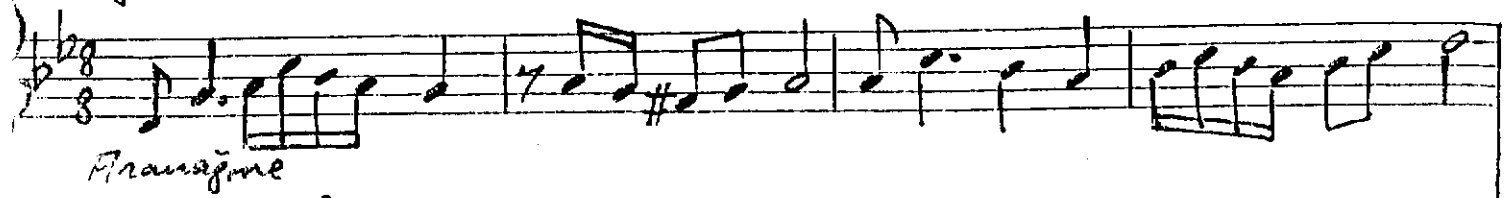
Nihâvend Şarkı

Bu Sabah Bir
Gül Gördüm

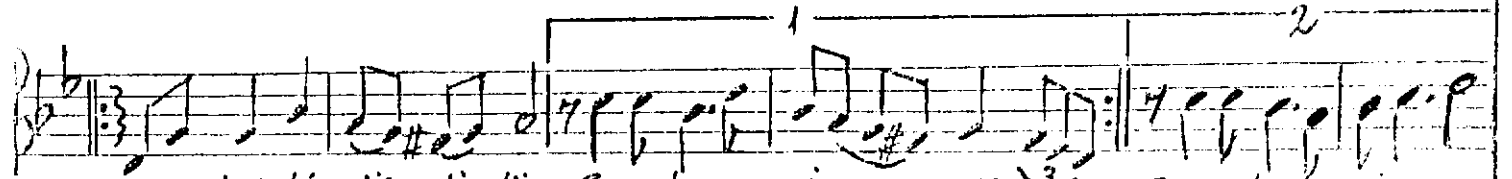
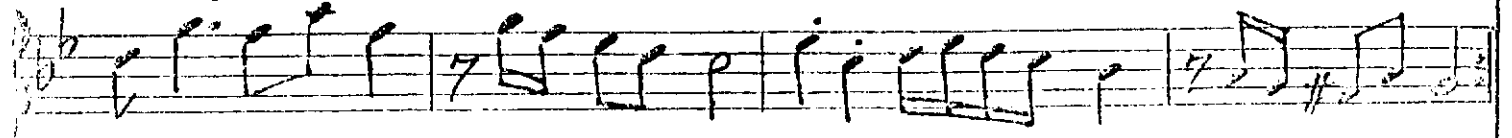
Söz: Dr. Aytekin Çolakoğlu
Müzik: Dr. Aytekin Çolakoğlu

$\text{♩} = 208/176$

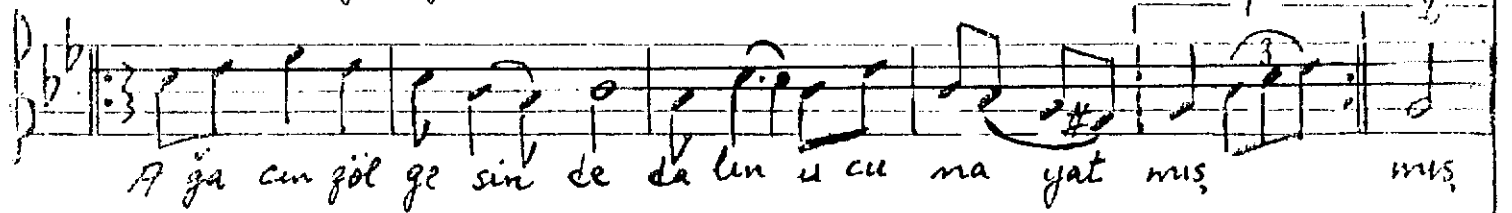
Düyek



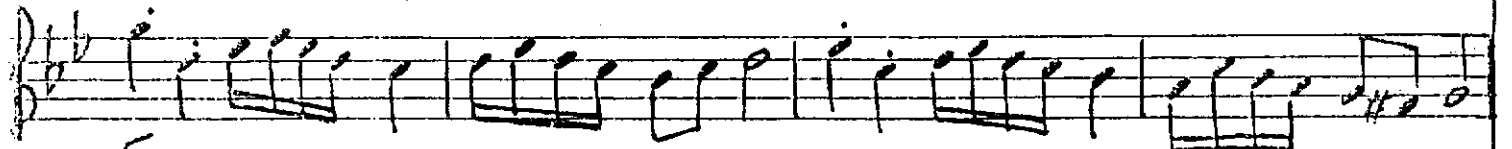
Aranağme



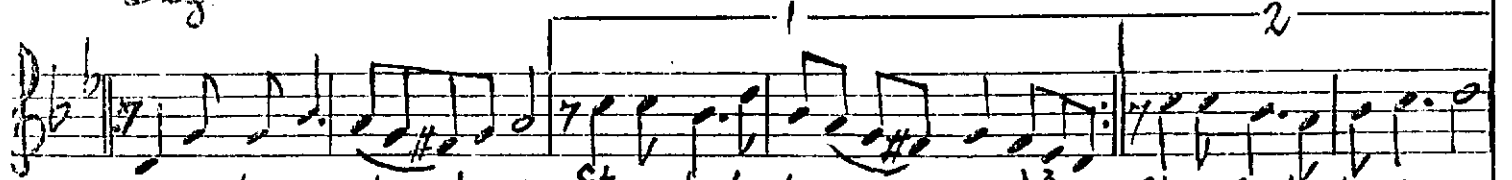
Bu sa bah bir gül gör düm Emcadan ye ni aç mıs, Emcadan ye ni aç mıs,



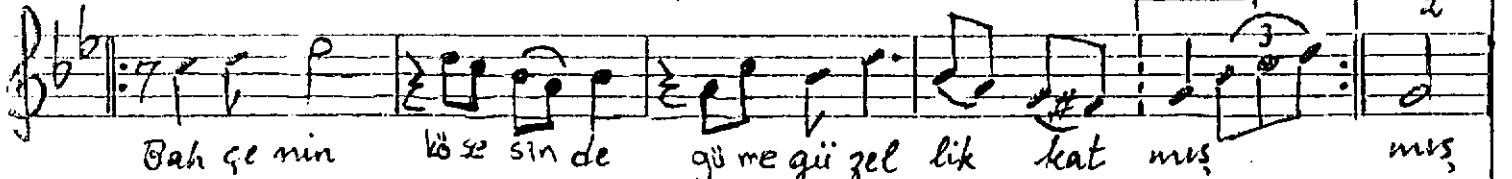
Ağa cin göl ge sin de da lun u cu na yat mıs, mıs,



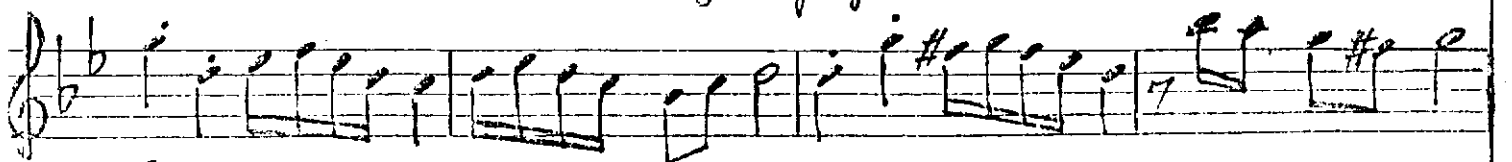
Saz



Rengi beyaz dan be yaz Et ra fa ko ku saç mıs, Et ra fa ko ku saç mıs,



Bah çe nin kö se sin de gü me gü zel lik kat mıs, mıs,



Saz



Sor dum ev di gi ner de Beni gö rüm ce kaç mıs, mıs,

Vihâvend Sârkı

Bu Sâhah Bir
Gül Gördüm
(Devamı)

A lır qı de rım dı ye-saz- Ağ la yıp a ğıt yak mıs, saz- ağ la yıp a
ğıt yak mıs, -saz-
İş te gül İş te bül bül A yur ma be ni -saz-
Bı rak bur da so la yım -saz- Gö tür me be ni -saz-
Öl dın me be ni

Handwritten musical score for 'Vihâvend Sârkı'. The score is written on four staves. The first staff begins with a treble clef and a key signature of one flat (B-flat). The melody is written in eighth and sixteenth notes, with some triplets. The lyrics are written below the staff. The second staff continues the melody and includes a tempo marking '♩ = 146'. The third staff continues the melody and includes a key signature change to two flats (B-flat and E-flat). The fourth staff continues the melody and includes a key signature change to one flat (B-flat). The score ends with a double bar line and a final key signature of one flat (B-flat).